











WinEXIT Version 3.20

(for Windows 3.1 / Win32s)

This Help file contains information on the WinEXIT utility program. Click the mouse on the topic you wish to see more information on. Click on the WinEXIT icon above for copyright information. For help with using Windows HELP, press F1 or select the **H**ow to Use **H**elp menu item in the **H**elp menu.

-  [Introduction to WinEXIT](#)
-  [Installing WinEXIT](#)
-  [Using WinEXIT](#)
-  [Configuring WinEXIT](#)
-  [WinEXIT System Menu](#)
-  [WinEXIT Command-Line Options](#)
-  [WinEXIT History and Technical Background](#)
-  [WinEXIT Copyright Information](#)

 **WinEXIT** Version 3.20
(for Windows 3.1 / Win32s)

Introduction to WinEXIT

WinEXIT is one of those simple little programs that can make life a little easier. The purpose of this program is simply to allow you to double-click on an icon and shutdown Windows™.

You can just simply exit Windows, or choose to reboot Windows or reboot the whole machine. You can also configure WinEXIT to run from a folder in Program Manager and exit Windows that way.

NOTE: The "reboot" feature is only available under Windows 3.1 and above.

BUT DON'T WORRY!

This method of closing down Windows is the same way Program Manager does it. So no work will be lost. For example, let's say you have EXCEL running with a spreadsheet you just created or modified, but haven't saved yet. EXCEL (and all running programs) will get notified by Windows that it is closing down, so you have a chance to save your work. This principle is the same whether you are exiting Windows, rebooting Windows, or rebooting the machine through WinEXIT.

 **WinEXIT** Version 3.20
(for Windows 3.1 / Win32s)

WinEXIT Installation

Installation of the WinEXIT program is very simple. The normal installation procedure is to use the SETUP program. This Windows-based program installs WinEXIT into any directory of your choice. It then adds the WinEXIT program to your Startup folder in Program Manager. That way WinEXIT can start up and be available to use every time you start Windows. The program will load itself as an icon on the bottom of the screen. The program is set up to only allow only one copy of itself to run at any one time.

You can also install it as an entry in a different Program Manager folder. You can configure that folder entry to pass WinEXIT command-line options that immediately execute WinEXIT functions. See WinEXIT Command-Line Options for details on command-line options.

See the Windows manual or Program Manager HELP for details on how to add programs to Program Manager folders (groups).

*Please note that the SETUP program also installs **Win32s**. WinEXIT is a 32-bit (Win32™) Windows NT™ application. It changes its behavior and command options when run under the Windows NT Operating System. The installation of Win32s is necessary to allow Win32 apps to run under Windows 3.1. For more information on Win32s, see the WinEXIT History and Technical Background section.*

See also:

Using WinEXIT

Configuring WinEXIT

WinEXIT System Menu

WinEXIT Command-Line Options

WinEXIT History and Technical Background

 **WinEXIT** Version 3.20
(for Windows 3.1 / Win32s)

Using WinEXIT

The operation of WinEXIT is very simple. When you run it without the command-line options, it loads up as an icon on the desktop. Double-click on that icon and WinEXIT will shutdown Windows. **That's all there is too it!**

Of course, there are other functions WinEXIT can perform. Specifically the ability to reboot Windows or reboot the whole machine. These capabilities can be very useful when adjusting Windows system settings, or when problems arise and you need to start from scratch.

There are 3 ways WinEXIT's commands can be accessed:

Double-click on the WinEXIT icon

This is the normal way WinEXIT is used. The action of double-clicking on the WinEXIT icon is considered to be the *default action*. This *default action* can be set using the WinEXIT Configuration Dialog Box. Here you can set which function (EXIT WINDOWS, REBOOT WINDOWS, REBOOT MACHINE) will be executed when you double-click on the WinEXIT icon.

Choose a menu item from WinEXIT's system menu

The system menu contains all the possible WinEXIT commands. Click once on the WinEXIT icon to display the system menu. See the WinEXIT System Menu section for details.

Run WinEXIT using a command-line option

See the WinEXIT Command-Line Options section for details.

■ **WinEXIT** Version 3.20
(for Windows 3.1 / Win32s)

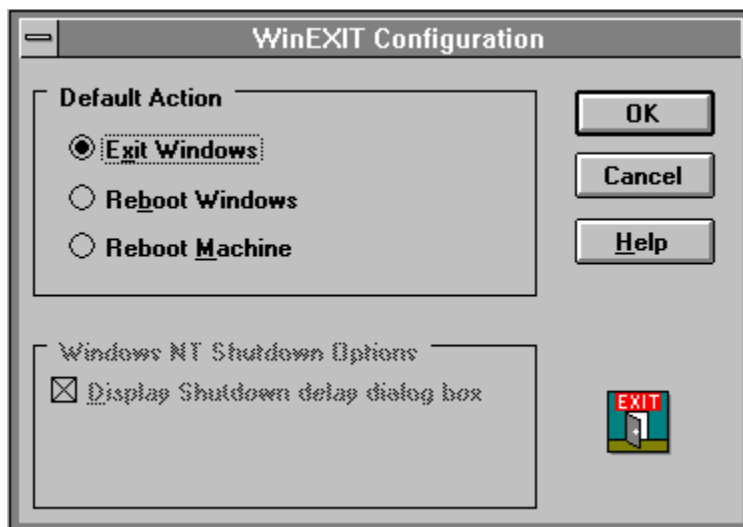
WinEXIT Configuration Dialog Box

The WinEXIT configuration dialog box is used to change the default behavior (or action) of WinEXIT. The default action is when you double-click on the WinEXIT icon when it is running. Note that WinEXIT has a number of command-line options which override the default action. See [WinEXIT Command-Line Options](#) for details.

To display the Configuration Dialog Box, choose **Configure WinEXIT...** from the WinEXIT icon's system menu. To display and use WinEXIT's system menu, click once on the WinEXIT icon.

Below is the WinEXIT Configuration Dialog Box. To get a description on each part of the dialog box, click once on the part in question to receive Help.

WinEXIT Configuration Dialog Box



See also:

[Using WinEXIT](#)

[WinEXIT System Menu](#)

[WinEXIT Command-Line Options](#)

 **WinEXIT** Version 3.20
(for Windows 3.1 / Win32s)

WinEXIT System Menu

All WinEXIT functions can be accessed from the WinEXIT icon's system menu. To display and use WinEXIT's system menu, click once on the WinEXIT icon. If you choose either shutdown system or reboot from the system menu, WinEXIT will use any shutdown options you specified in the WinEXIT Configuration Dialog Box.

Below is the system menu of the WinEXIT program. To get a description of what each item means, click once on the menu item in question.

WinEXIT System Menu

E xit Windows	
M ove Icon	
C lose	Alt+F4
S witch To...	Ctrl+Esc
R eboot Windows	
R eboot Machine	
C onfigure WinEXIT...	
A bout...	
H elp	

See also:

[Using WinEXIT](#)

[Configuring WinEXIT](#)

[WinEXIT Command-Line Options](#)

 **WinEXIT** Version 3.20
(for Windows 3.1 / Win32s)

WinEXIT Command-Line Options

There are a number of command-line options for WinEXIT. These options allow you to execute WinEXIT's functions from a Program Manager folder without loading up WinEXIT as an icon. This feature is useful when you want to leave WinEXIT in a folder and make different entries for each of the functions. For example, one entry would exit Windows. Another would reboot Windows. This method can also be used to put WinEXIT on desktop toolbars and toolboxes, such as the shareware program WinDock, or hDC's Power Launcher™.

The following is the list of options. The meaning of each is pretty obvious. Upper or lower case doesn't matter. Of course, only one option can be used at a time. The options are:

```
/EXITWINDOWS  
/REBOOTWINDOWS  
/REBOOTMACHINE
```

Note that there are no spaces between the slash (/) and the first letter of the option.

NOTE: The "reboot" feature is only available under Windows 3.1 and above.

See also:

[Using WinEXIT](#)

[Configuring WinEXIT](#)

[WinEXIT System Menu](#)

WinEXIT Version 3.20 (for Windows 3.1 / Win32s)

WinEXIT History and Technical Background

Why exit Windows?

Good question! Since the advent of Windows 3.0, I have found it unnecessary to exit to DOS. I simply just open up a DOS box to run a DOS application. Or open up an empty DOS box if I really miss the command line (a very rare occurrence). This is even more true now with the stability and greater usability of Windows 3.1.

Well, when I first wrote WinEXIT, I just got my hands on Windows 3.0. DOS box support and general stability was horrendous under 2.x, so I was a little afraid to trust it even with this new version. Also, being a developer, I have a tendency to screw around a bit with programs and operating systems in ways they were not meant to be screwed around with. So there were many times where I would change system settings and have to go through Program Manager to exit Windows and restart it for the new settings to take effect. That got to be a long and tedious procedure. Then I found out about the system call to exit Windows, just like Program Manager does.

The rest, as they say, is history!

A Little Technical Background

WinEXIT uses a standard Windows system call to perform all its functions. When you execute one of those functions, the Windows Operating System sends a message to all the programs that are running that it is about to shutdown the system. This is the same no matter if you pick EXIT WINDOWS, REBOOT WINDOWS, or REBOOT MACHINE. All Windows programs (at least the ones that are well-behaved and follow the rules) that need to save data somewhere before it closing down respond to this message. Programs such as word processors, database programs, any program that stores its information elsewhere when it is not running.

Using a word processor as an example, when the word processing program receives the shutdown message it would first check to see if the document has been changed and not saved to disk. If this is true, then the program would prompt you to save the document. If you save the document, then the application would return a value to Windows signaling that, as far as this program is concerned, Windows can shut down the system. If you choose not to save the document, then the application returns a value signaling that Windows cannot shut down yet. The system shutdown procedure would stop right there. ***This is why you would never lose your work using WinEXIT.***

Also note that Windows would stop any system shutdown immediately if a DOS box was open. Windows cannot send a "shutdown" message to a DOS application. Besides, even if Windows could, the DOS application wouldn't understand what it meant. ***This way any work-in-progress in a DOS app would not be lost as well.***

What is Win32s?

Microsoft© Win32^{STM} version 1.0 is a product that allows Win32TM applications for the Windows NTTM Operating System to run binary-compatibly on Windows 3.1. Win32s is an operating system extension allowing Windows 3.1 to run Win32 applications (32-bit Windows apps). Win32s consists of a virtual device driver (VxD) and a set of dynamic-link libraries (DLLs) that extend Windows 3.1 to support Win32 applications.

WinEXIT is a Win32 application. This was done so only one executable file need be shipped for both operating systems. WinEXIT detects which operating system it is running on, and based on that it changes its behavior and command options. This installation will allow you in the future to run upcoming 32-bit Windows applications.

Having Win32s loaded will not affect your Windows applications or normal operations under Windows 3.1. Win32s only applies to the running of Win32 applications under Windows 3.1. Your applications, and Windows itself, will operate normally.

System Menu

The menu farthest to the left in the title bar, indicated by a Spacebar icon. The System Menu, also known as the Control Menu, appears on every application that runs in a window and on some non-Windows applications. Document windows, icons, and most dialog boxes all have system menus.

For application windows, document windows, icons, and dialog boxes, the standard system menu commands include *Move*, *Size*, and *Close*. You can also switch to the Task List by using the system menu option *Switch to...* . For non-Windows applications, the system menu contains commands for transferring information back and forth between the clipboard and perform other functions, depending on the application.

Icon

Icons are a visual representation of either a physical or abstract object. For example, the above icon represents the WinEXIT program. Icons can represent a disk drive, a directory, a group folder, an application, or a document.

Folder

A window that displays the items of a group in Program Manager. These items can be applications, files associated with applications, or a combination of both. Folders, also known as groups, are useful in organizing your programs and data files for easy access.

Startup Folder

This is special Program Manager folder. Any application defined in this folder will be run when Windows first starts up. It is analogous to the `LOAD=` and `RUN=` lines in the `WIN.INI` file.

The startup folder was first introduced in Windows 3.1.

WinEXIT System Menu

Exit Windows

This menu item, when chosen, will initiate the shutdown of Windows.

WinEXIT System Menu

Move Icon

This menu item, when chosen, will allow you to position the WinEXIT icon on the desktop. It is the same as the standard **M**ove system menu entry.

WinEXIT System Menu

Close

This menu item, when chosen, will close the WinEXIT program.

WinEXIT System Menu

Switch to...

This menu item, when chosen, will bring up the Task Manager program. Same as in all system menus.

WinEXIT System Menu

Reboot Windows

This menu item, when chosen, will initiate a reboot of Windows. Windows will shut down and re-start again.

NOTE: The "reboot" feature is only available under Windows 3.1 and above.

WinEXIT System Menu

Reboot Machine

This menu item, when chosen, will reboot the whole machine. Windows will first shut down, then the machine will be warm-booted.

NOTE: The "reboot" feature is only available under Windows 3.1 and above.

WinEXIT System Menu

About...

This menu item, when chosen, will display the ABOUT dialog box. This contains copyright and version information about WinEXIT.

WinEXIT System Menu

Help

This menu item, when chosen, will bring up this HELP file.

WinEXIT System Menu

Configure WinEXIT...

This menu item, when chosen, will bring up the Configuration Dialog Box and allow you to change WinEXIT's options.

WinEXIT Configuration Dialog Box

Exit Windows

When this item is selected it means that the default action of WinEXIT (when you double-click on the WinEXIT icon) will be *Exit Windows* (initiate the shutdown of Windows).

WinEXIT Configuration Dialog Box

Reboot Windows

When this item is selected it means that the default action of WinEXIT (when you double-click on the WinEXIT icon) will be *Reboot Windows* (shutdown and restart Windows).

WinEXIT Configuration Dialog Box

Reboot Machine

When this item is selected it means that the default action of WinEXIT (when you double-click on the WinEXIT icon) will be *Reboot Machine* (shutdown Windows and reboot machine).

WinEXIT Configuration Dialog Box

Disabled Options

These options only apply to WinEXIT when it is running under the Windows NT Operating System.

WinEXIT Configuration Dialog Box

OK button

Press this button to accept and save any changes made to this dialog box.

WinEXIT Configuration Dialog Box

Cancel button

Press this button to abort and not save any changes made to this dialog box.

WinEXIT Configuration Dialog Box

HELP button

Press this button to display Help on using the Configuration Dialog Box.

Copyrights

WinEXIT **Version 3.20**

Silverware Consulting
Copyright ©1991-1993 by Howard Silver
CompuServe address - 76675, 3476

Silverware and WinEXIT are trademarks of Silverware Consulting.
This product is distributed as FREeware.

This product was developed using Microsoft Visual C++ Version 1.0
and MFC Version 2.0. It was compiled using the Windows NT SDK
tools. This help file was created using Microsoft Word Version 2.0a.

Other trademarks:

Power Launcher™ is a trademark of hDC Computer Corporation.
Microsoft, Windows, Visual C++, Microsoft Word, Win32,
Win32s, and Windows NT are trademarks of Microsoft Corporation.

Special thanks to Harry Field.

